

Model

Applicable To

File Under

Bulletin No.

1996-98
CIVIC

4-DOOR



98-082

Issue Date
NOV 1998

Windows Bind or Come Out of the Run Channels

SYMPTOM

One or more windows are binding or have come out of the glass run channels.

PROBABLE CAUSE

Faulty run channels.

CORRECTIVE ACTION

Replace the faulty glass run channel(s). Inspect the front, the center, and the rear channels. Replace the channels *only* if they are damaged. Inspect the window regulator(s) of the binding window(s). Replace the window regulators *only* if they are damaged.

WARRANTY CLAIM INFORMATION

The normal warranty applies.

Description	FRT
Door Glass Run Channel, Left Front – Replace	0.7
Inspect and/or replace one channel, add	0.2
Inspect and/or replace two channels, add	0.4
Replace one window regulator	0.2
Door Glass Run Channel, Right Front – Replace	0.7
Inspect and/or replace one channel, add	0.2
Inspect and/or replace two channels, add	0.4
Replace one window regulator	0.2
Door Glass Run Channel, Left Rear – Replace	0.7
Inspect and/or replace one channel, add	0.2
Replace one window regulator	0.2
Door Glass Run Channel, Right Rear – Replace	0.7
Inspect and/or replace one channel, add	0.2
Replace one window regulator	0.2

Failed part: Left Front P/N 72275-S04-003
 Right Front P/N 72235-S04-003
 Left Rear P/N 72775-S04-003
 Right Rear P/N 72735-S04-003

Defect code: 030

PARTS INFORMATION

Door Glass Run Channel

Left Front P/N 72275-S04-003
 Left Rear P/N 72775-S04-003
 Right Front P/N 72235-S04-003
 Right Rear P/N 72735-S04-003

Window Regulator – Manual

Left Front P/N 72250-S04-003
 Left Rear '96 P/N 72750-S01-003
 Left Rear '97-'98 P/N 72750-S01-013
 Right Front P/N 72210-S04-003
 Right Rear '96 P/N 72710-S01-003
 Right Rear '97-'98 P/N 72710-S01-013

Window Regulator – Power

Left Rear '96 P/N 04726-S01-A00
 Left Rear '97-'98 P/N 04726-S01-A01
 Right Rear '96 P/N 04721-S01-A00
 Right Rear '97-'98 P/N 04721-S01-A01

Door Channel – Front

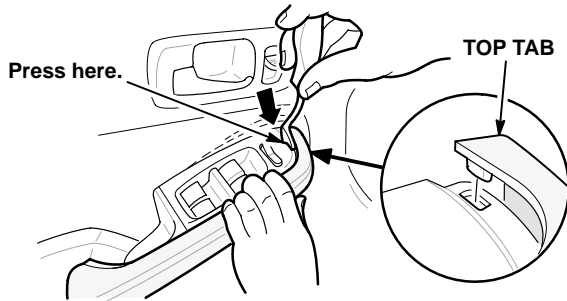
Left Front P/N 72270-S04-003
 Right Front P/N 72230-S04-003

Door Channel – Center Channel

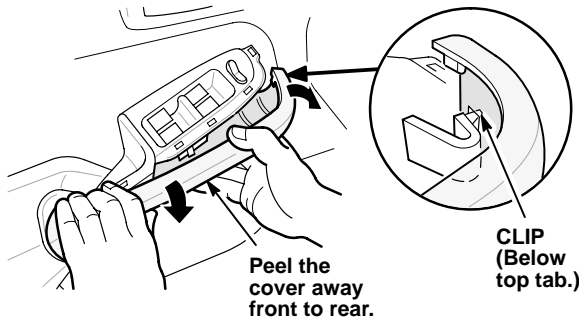
Left Front P/N 72271-S04-003
 Left Rear P/N 72771-S04-003
 Right Front P/N 72231-S04-003
 Right Rear P/N 72731-S04-003

REPAIR PROCEDURE FOR THE FRONT DOOR

1. With a trim removal tool, carefully press down on the front edge of the power window switch panel between the switch and the door grip cover. This releases the top tab on the cover.

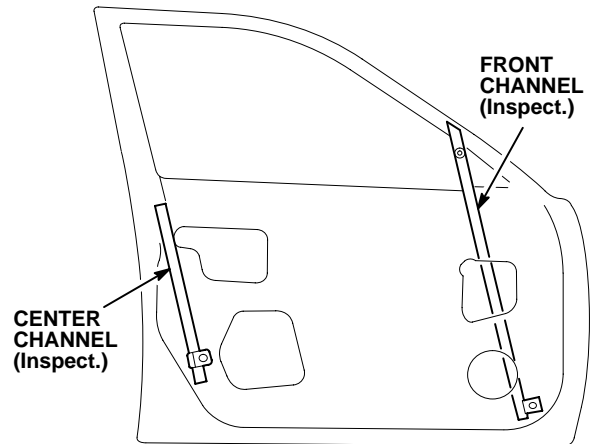


2. While still pressing down on the switch panel, use your free hand to pull the cover away from the switch until the clip below the top tab releases from the door grip.

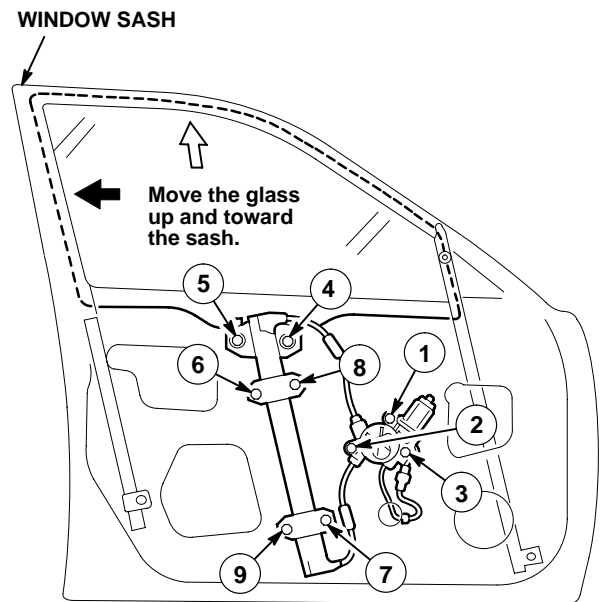


3. Remove the door panel. Refer to the Body section of the 1996 Civic Shop Manual.
4. Remove the plastic rain protector and, if so equipped, the power door lock control unit.
5. Move the window until you can see the bolts that secure the glass to the regulator, then remove the bolts. Carefully remove the glass by pulling it out through the window slot.
6. Remove and discard the glass run channel.

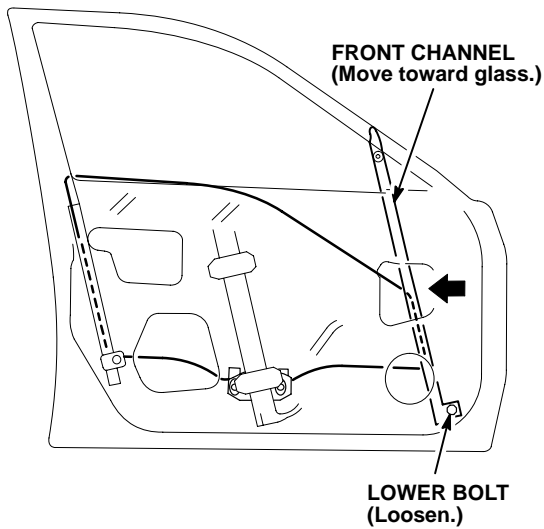
7. Inspect the front channel and the center channel for deformation or damage. Replace any damaged channels (see PARTS INFORMATION).



8. Install the new glass run channel (see PARTS INFORMATION).
9. Reinstall the glass, and install the mounting bolts as tight as you can by hand.
10. Raise the glass all the way. Loosen the window regulator bolts, and move the glass up and toward the window sash.
11. Torque the bolts to 8 N·m in the sequence shown.



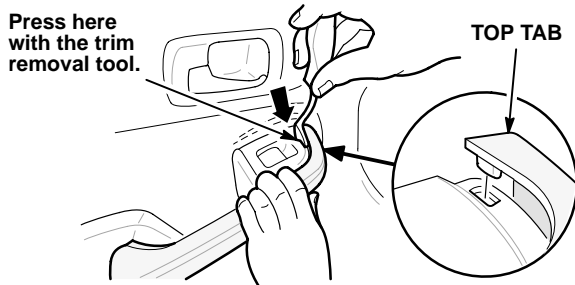
- Lower the glass all the way. Loosen the bolt on the front channel, move the channel toward the glass, then retighten the bolt.



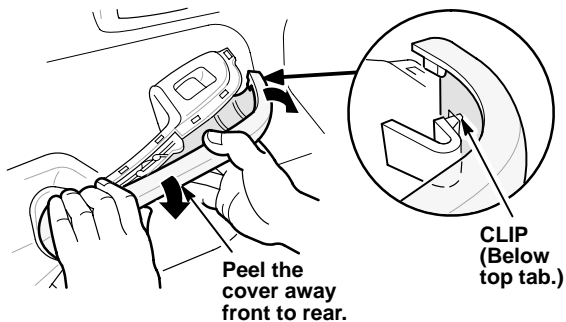
- Raise and lower the window several times to make sure the window operates smoothly. If needed, readjust the glass and the front channel.
- Reinstall all removed parts.

REPAIR PROCEDURE FOR THE REAR DOOR

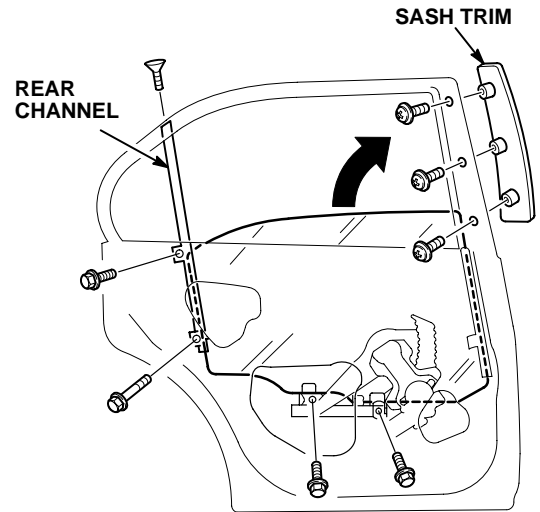
- With a trim removal tool, carefully press down on the front edge of the power window switch panel between the switch and the door grip cover. This releases the top tab on the cover.



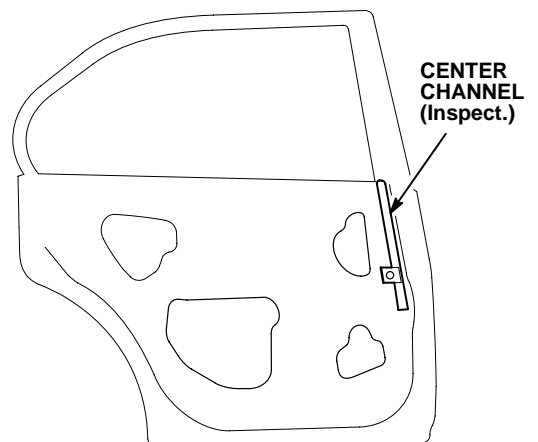
- While still pressing down on the switch panel, use your free hand to pull the cover away from the switch until the clip below the top tab releases from the door grip.



- Remove the door panel. Refer to the the Body section of the 1996 Civic Shop Manual.
- Remove the plastic rain protector.
- Lower the glass all the way. Remove the rear channel, and remove the B-pillar sash trim.

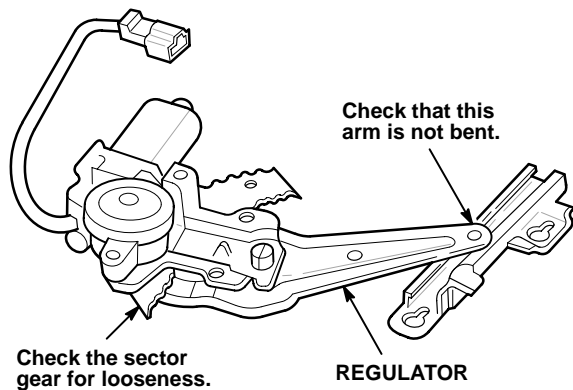


- Remove the bolts that secure the glass to the regulator.
- Carefully remove the glass by pulling it out through the window slot.
- Remove and discard the glass run channel.
- Inspect the rear center channel for any deformity or damage. If it is damaged, replace the channel (see PARTS INFORMATION).

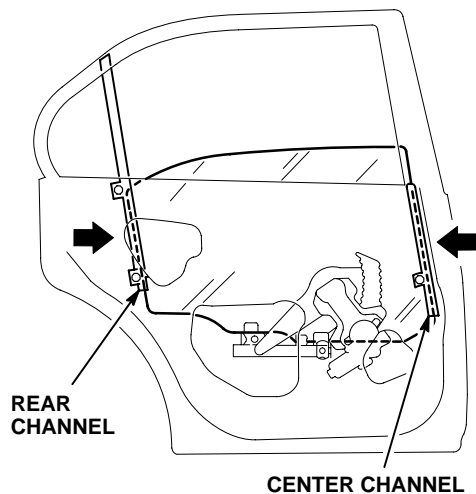


10. Inspect the window regulator for bent arms, and check the sector gear for looseness. If it is damaged, replace the window regulator (see PARTS INFORMATION).

NOTE: When replacing a rear power window regulator, reuse the original motor.



11. Install the new glass run channel (see PARTS INFORMATION).
12. Install the glass, the B-pillar trim, and the rear channel.



13. Loosen the bolts on the center channel and the rear channel. Move both channels toward the glass, then retighten the bolts.
14. Raise and lower the window several times to make sure the window operates smoothly. If needed, readjust the channels.
15. Reinstall all removed parts.